



ENCLOSED FUEL TRANSFER SYSTEM

EFTS SERIES

TECHNICAL DATA SHEET

Fuel transfer systems are a crucial part of your emergency generator system and are a primary factor of overall system reliability. **Cougar Fuel Systems™** provide an automatic, reliable means of maintaining fuel system levels for all of your diesel driven equipment needs including emergency generator, boiler and water pumping applications. **Cougar Fuel Systems™** offers a wide range of control capabilities from simple duplex pump control to total system control and monitoring. Our transfer systems feature a wide range of capacities and some of the most stringent performance and construction specifications on the market today.

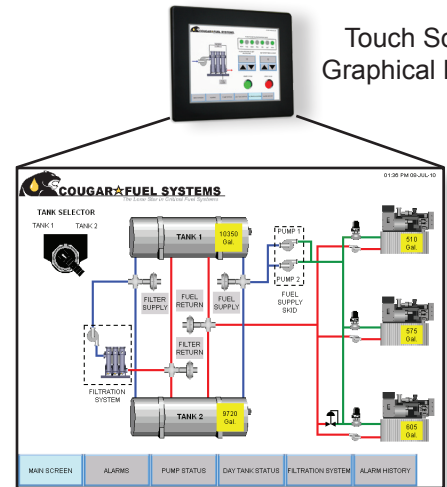
As always, we can build custom systems for your specific needs, however, most Customers find our standard packages meet and exceed most project requirements. The **Cougar Fuel Systems™** EFTS Series transfer system includes the following as part of the standard package:



FEATURES

- Fully Contained Freestanding Weatherproof Enclosure
- UL 508 Listed Controller with Automatic Operation
- Graphical Display for Easy User Interface
- Main Tank(s) Leak & Level Monitoring
- Building Management System Communications Interface
- Integral Positive Displacement Transfer Pumps
- Inlet Strainer and Gauges
- Integral Differential Pressure Switch
- Flow Proving Controls
- Integral Leak Basin with Leak Switch
- Sight Flow Indicator for Quick Operational Assessment
- API 607 Firesafe Isolation Valves
- Schedule 40 Steel/S.S. Pipe System (No Rubber Hoses)

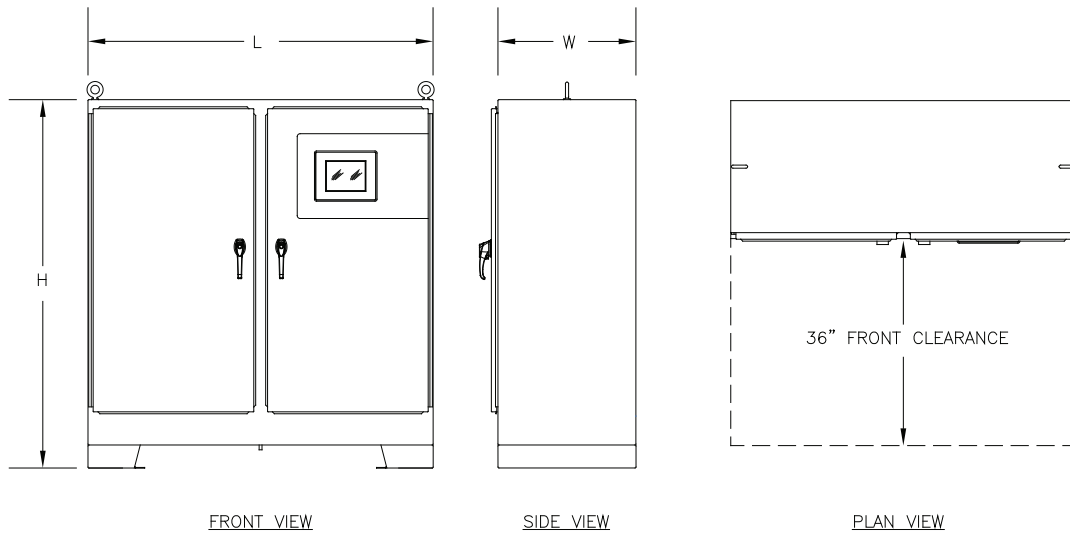
Touch Screen
Graphical Display



User Interface



Inside View



Catalog Number	System Performance			Electrical		Dimensions			Connections		Total Generator(s) Load (4)
	Flow Rate (GPH)	Pump Head (2) (PSI)	System Rating (2) (PSI)	HP	Volt/Phase (3)	L	W	H	Suction	Discharge	KW
EFTS-300	300	50	100	1/2	120/1	60"	18"	66"	1"	1"	≤ 3,000
EFTS-420	420	50	100	3/4	120/1	60"	18"	66"	1"	1"	≤ 5,000
EFTS-900	900	50	100	1	480/3	60"	18"	66"	1 1/2"	1 1/2"	≤ 10,000
EFTS-1800 (1)	1800	50	100	2	480/3	60"	18"	66"	1 1/2"	1 1/2"	≤ 20,000

1. Larger units available, contact Factory.
2. All units: Maximum System Pressure Rating is 100 psi @ 225°F.
3. Other voltages available on requests.
4. For quick reference, contact Factory for project specific selections. Includes 20% safety factor.

OPTIONAL FEATURES

- Multiple Tank Selection with Valve Control
- Remote Fill Operations
- Day Tank Interface
- Integral Return Pump (add suffix -R), standard pump will exceed supply capacity, may increase standard enclosure size
- BAS Interface via Dry Contacts
- Dead Front Enclosure provided for outdoor applications, HMI screen located inside enclosure

